

TRAIL 2025

AIRBORNE LASER SCANNING FOR FARMED LANDSCAPES

28-30 October
↘ Hostel Proteus
Postojna, Slovenia



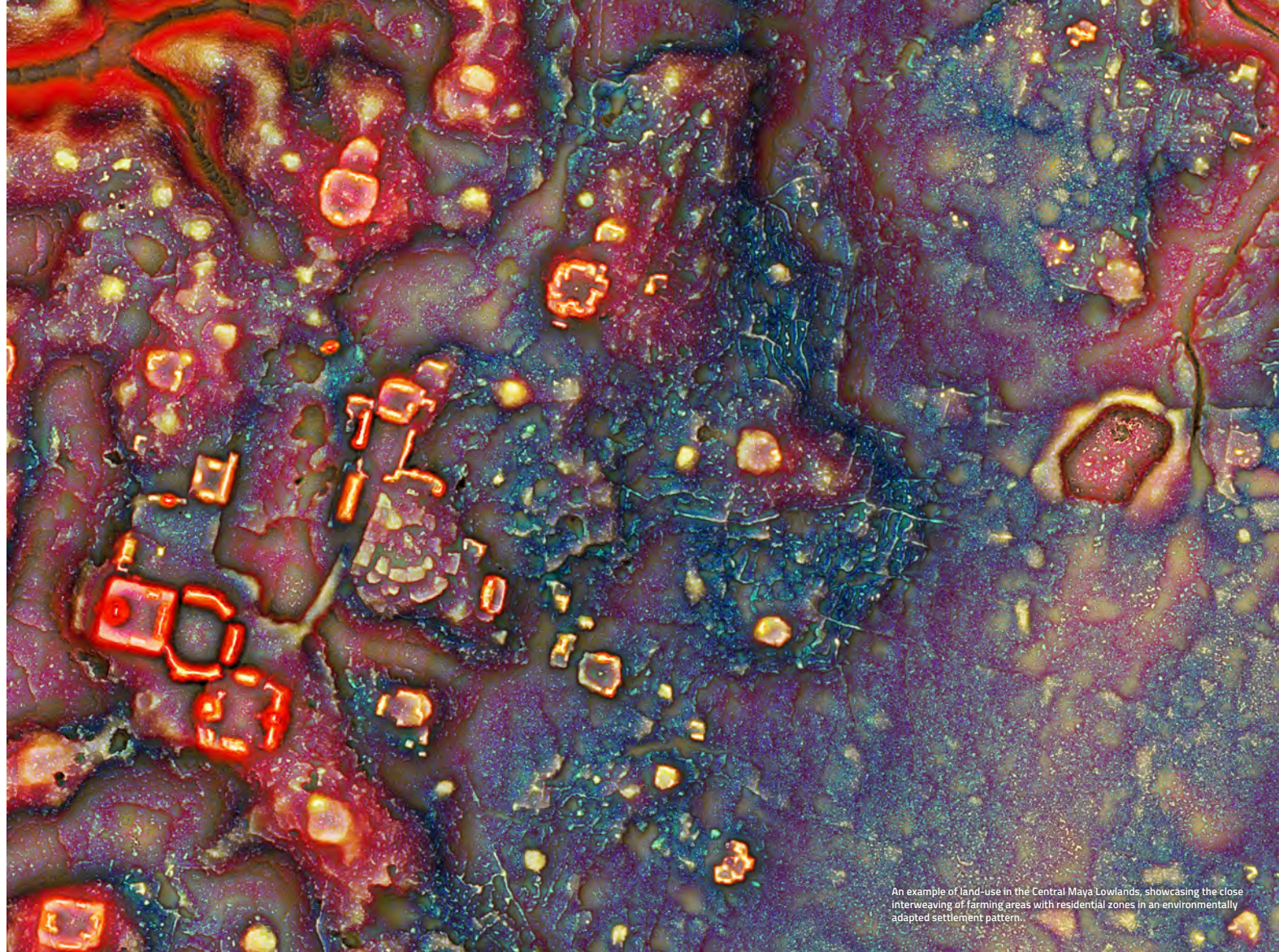
Airborne laser scanning for farmed landscapes

Posters, Presentations, Workshops

TRAIL 2025 focuses on heavily cultivated, mainly lowland, landscapes where archaeological remains have been flattened and largely removed.

Farmed landscapes represent particular challenges to archaeologists because cultivation tends to erode or completely remove the remains of earlier periods. As a result, 'farming' is often an archaeologically invisible process that nevertheless has profound implications for what is preserved in the complex palimpsests of our landscapes.

TRAIL Meetings incorporate presentations of case studies and methods, interactive workshops, poster presentations, and a round table session. They provide opportunities for practical training through small group work. We aim for a 4:1 student teacher ratio in workshops to provide learning opportunities that go beyond basic technical skills. The entire group stays and takes meals on-site at the conference venue. We have an active social programme as part of the meeting, including an international potluck. We aim to bring together an international group of interdisciplinary scientists, professionals, and postgraduate (Masters and PhD) students.



An example of land-use in the Central Maya Lowlands, showcasing the close interweaving of farming areas with residential zones in an environmentally adapted settlement pattern.

This year's workshops are:

- *Gentle introduction in the archaeological interpretation of lidar-derived data*
Rebecca Bennett and Luka Škerjanec
- *Archaeological ground point filtering of lidar point clouds*
Michael Doneus, Hannah Weiser and Zoran Čučković
- *Automatic Detection of Archaeological Features (ADAF)*
Žiga Kokalj, Nejc Čož and Jürgen Landauer
- *Processing UAS lidar data*
Jitte Waagen, Luka Škerjanec, Elise Fovet and João Fonte

The meeting will be in **Postojna**, Slovenia, **28–30 October 2025**.

The registration fee (270 €, 115 € for students) includes accommodation, meals and the excursion. Places are limited and **registration is open until 15 June**.

You are cordially invited!

On behalf of the organising committee,

Žiga Kokalj and Nejc Čož



trail.zrc-sazu.si